

Product

- Grande back to wall toilet suite

Kohler Code

76078A-0



Included Components

- Grande toilet pan.
- Grande toilet cistern 4.5/3L.
- Grande Quiet Close™, VQR (vertical, quick release toilet seat).
- Vario pan connector.
- Offset pan collar (20mm).
- Fill valve for top left rear entry.
- Fill valve for pan side entry (supplied with pan).
- Top left rear entry water supply hose.
- 2 x caps for pan side entry holes.
- 1 x hose ring for pan side entry hole.
- Floor fixing kit.

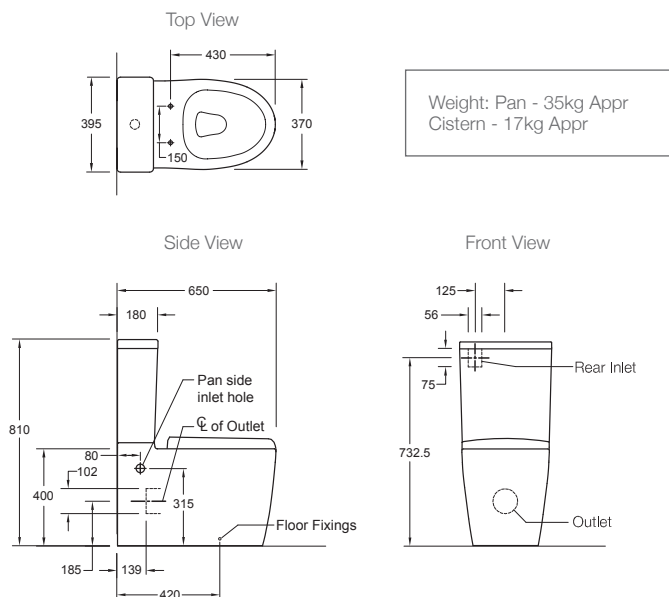


WELS RATING
(4 Star 3.5L av. flush)

Features

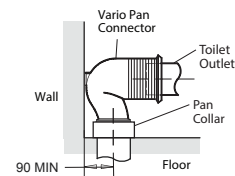
- Dual flush (4.5/3L).
- Water entry: Top left rear entry or right/left pan side entry.
- P-trap set out height: 185mm.
- S-trap set out:
 - Standard: 90mm - 160mm (with vario pan connector & 20mm offset pan collar - supplied).
 - Optional: 160mm - 230mm (with long adjustable vario pan connector, 98451A-0 - not supplied).
- Rimless pan design.
- Vitreous china.

Technical Details

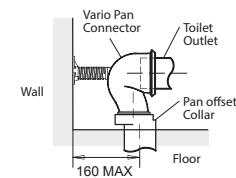


Vario pan connector
S-trap installation

Minimum set out



Maximum set out



*Note: Set outs between 160-230mm are achievable with the Long Adjustable Vario Connector 98451A-0 (not supplied).

Installation Notes:

- Water supply pressure range: 20 psi (137 kPa) - 72 psi (500 kPa).
- Can be installed as a P-trap using a straight connector (not supplied) or as an S-trap using the vario connector & pan offset collar (supplied).
- Top left rear entry water supply hose is supplied. Pan side entry water supply hose must be purchased separately if required.
- Supplied hose ring is only required with a pan side entry setup.